

Solar Panel

- 25 years warranty
- Highest conversion efficiency of 17%
- Anti-reflective and anti-soiling surface power, loss from dirt and dust
- Excellent mechanical load resistance
- PID resistant, high salt and ammonia resistance



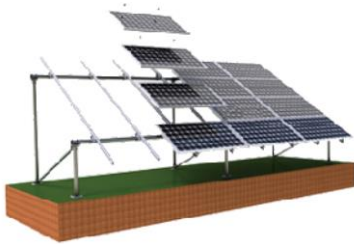
Controller & Inverter (all in one)

- MPPT controller, maximize utilization of solar panels
- Integrated design with controller, inverter and transformer
- Pure sine wave output
- Grid connected and off grid function
- Intelligent battery management function
- Complete protection



Battery

- Long service life
- Long self-discharge
- Good electric conductivity
- Safe and reliable venting system



Mounting Structure

- Residential roof (pitched roof)
- Commercial roof (flat roof & workshop roof)
- Ground solar mounting system
- Vertical wall solar mounting system



Accessories

- PV cable 4mm²
- AC cable
- DC switches
- AC breaker
- AC/DC combine box

Specifications			5000W
Solar Panel	Model		ST-M-270
	Max Power		270W
	Working Voltage		30.9V
	Working Current		8.73A
Inverter & Controller (all in one)	Model		STIN 5000
	PV Input Data	Max Input Power	6500W
		MPPT Tracking Range	125-580 V
		MPPT Efficiency	99.9%
		Max Input Current	11 A
	On Grid PV Data	Power	5000 W
		Rated Current	21.7 A
		Max Current	22.8 A
		Output Voltage	220/230/240 V
		Peak Efficiency	97.8%
		Efficiency Factor	> 0.99 (adjustable)
		Frequency	50/60 HZ
		Wave	Pure sine wave
	Off Grid PV Data	Output Voltage	220/230/240 V
		Frequency	50/60HZ
		Wave	Pure Sine Wave
		Conversion Time	≤10ms
		Power	2500/2750 W
		DC/AC	94%
	Battery Data	Voltage	
Max Charge Power		2500 W (adjustable)	
Max Charge Current		52 A (adjustable)	
Max Discharge Power		2500 W	
Max Discharge Current		52 A	
Capacity		100-300 Ah	
Type		Lead-acid/ Li-ion	
Size	Solar Panel	18.6 kg×18	1650×992×40
	Inverter & Controller (all in one)	28 kg	480×420×185
	Battery	40 kg×20	510×218×234